



FIRST TIME EXHIBITOR PACKAGE

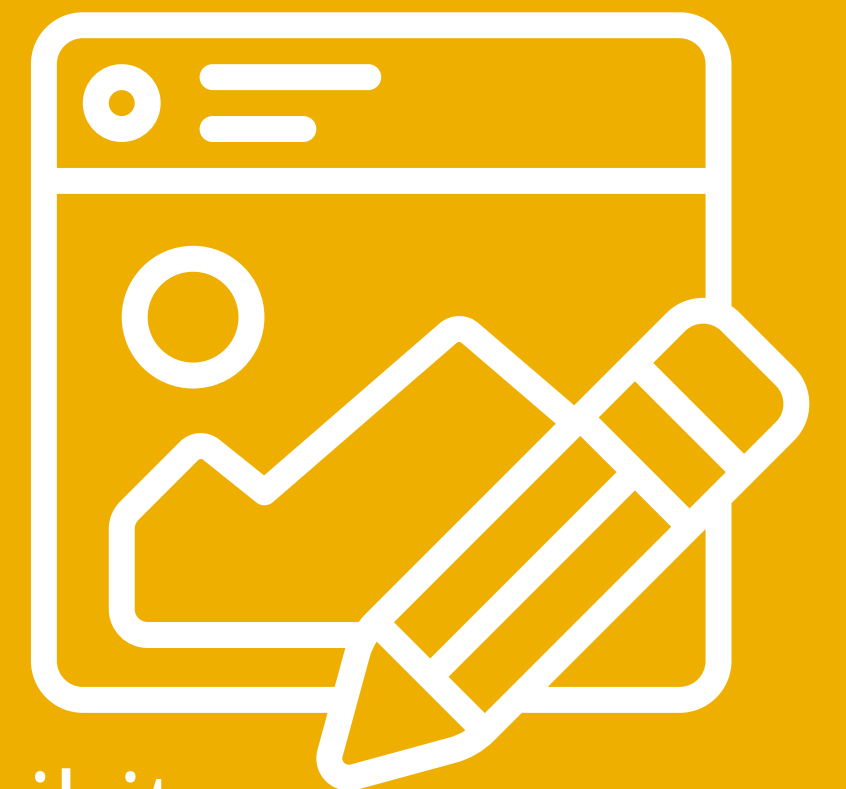
We're thrilled to welcome you as a first-time exhibitor, and invite you to take advantage of this complimentary support to elevate your presence.

1.



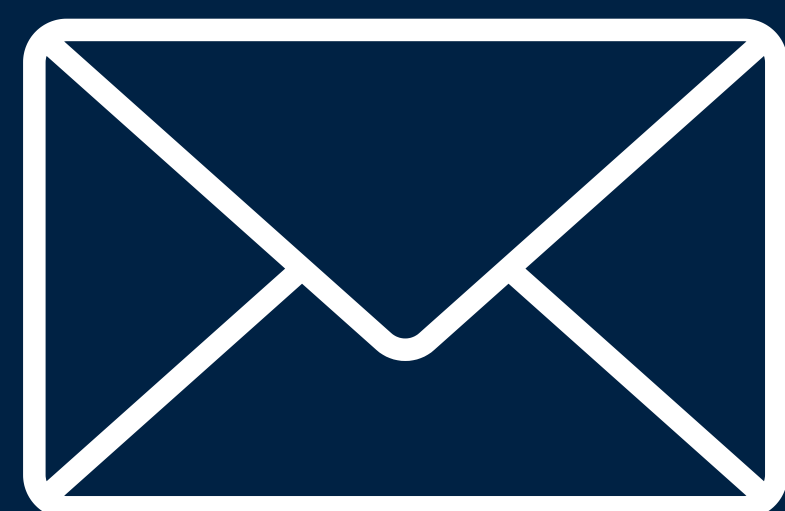
Be featured in a dedicated New Exhibitor section on the show website.

2.



Get recognized as a new exhibitor across WWETT social channels.

3.



Be highlighted in a New Exhibitor section within attendee marketing emails.

4.



Stand out with a New Exhibitor icon next to your company name in the exhibitor list.

5.



Be identified as a new exhibitor within the official event app.

6.



Receive a New Exhibitor floor cling displayed at your booth in the Expo Hall.